

Hollow Shaft Single Turn Potentiometer

Model PGL 60

Ø 31 mm

25 000 000 Cycles

Conductive plastic

Options	
Linearity	0.5%, 0.25%
Resistance tolerance	+/- 10%
Connections	Cable with connector, Wires
Functions	Center tab, Switches

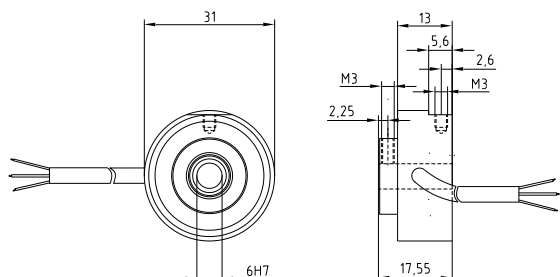


Electrical Characteristics		Mechanical Characteristics	
Resistance range	1- 10 kΩ	Rotational life	25'000'000 Cycles
Resistance tolerance	+/- 20%	mech. angle	20° - 348° / Continuous
el. angle	20° - 348°	Protection rating	IP 63
indep. Linearity	+/- 1%	Torque	typ. 0.7 cNm
Power rating	0.5 W / T _A 40°C		
rec. Wiper current	< 0.1μA		
max. Wiper current	10 mA (malfunction)		
Wiper resistance	< 500 ohm (new)		
Isulation resistance	10 GΩ / 500 VDC		
Dielectric strength	1000 VAC / 1 min.		
Temperature coefficient	600ppm / °C		
TC of voltage divider	30ppm / °C		

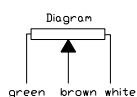
Environmental Conditions		Material	
Storage temperature	-40°C ÷ +105°C	Housing	Aluminium anodized
Operating temperature	-25°C ÷ +85°C	Rotor	Aluminium anodized
Climatic rating	25/085/56	Connections	Cable 1m
Shock	50G		
Vibration	10G		

Standard models:

PGL 60 M - KA



Connecting diagram



PGL 60= Potentiometer Standard

P G L 6 0 M - K A - 1 0 k - 3 2 0 - D D B - K L

L= Conductive plastic

M= Ø 6mm H7

Resistance
1, 5, 10 kohm
 Others on demand

KA= Cable
 LJ= Wires 145mm
 KS= Cable with connector

El. angle
320° others on demand

DDB= Continuous

Specifications are subject to change without notice